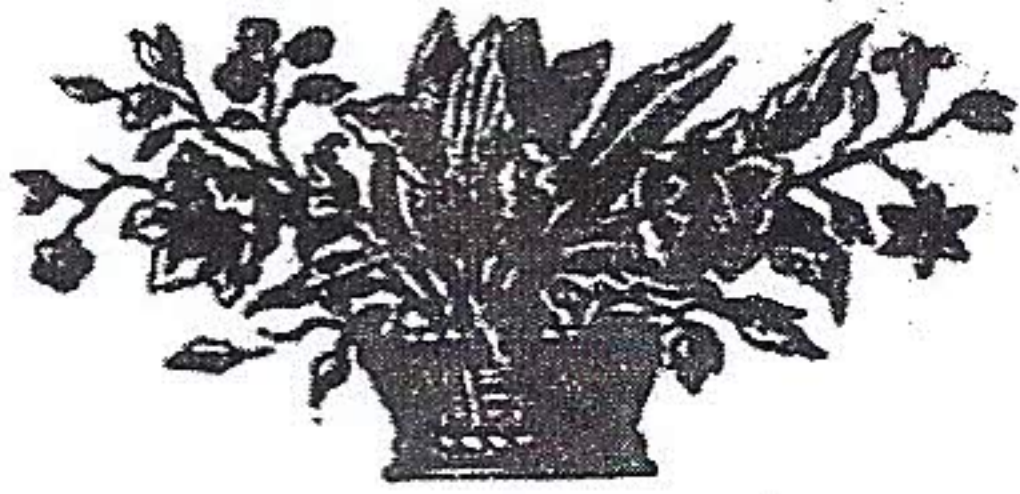
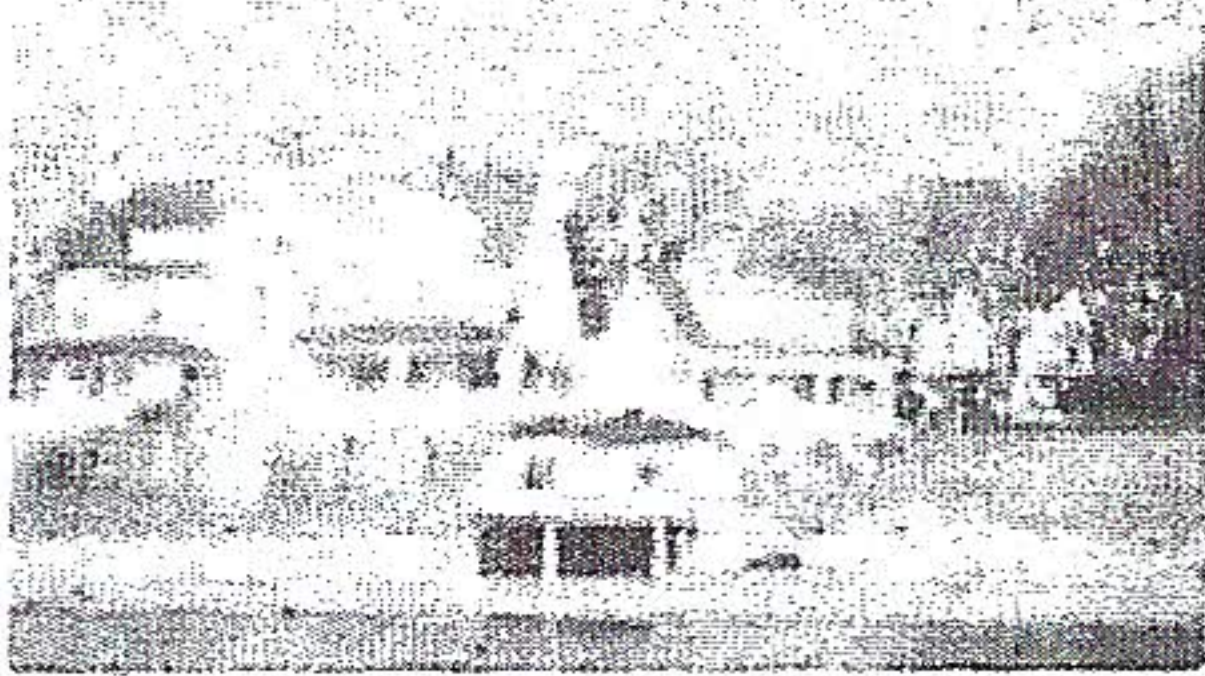


over three decades, is a gentleman of refinement and an accomplished organic gardener who boasts both Negro and Indian heritage. In 1967, after he recovered from a serious illness, Harpswell residents decided that some special recognition was due him and established the Arthur C. Clayton Horticultural Scholarship, awarded to a student at the University of Maine with an interest in plant science. Each year the tuition is raised by the Garden Club and the surplus is added to the capital fund which, club members hope, will eventually make the scholarship self-perpetuating.

In everything it does, from tending flowers to helping people, the Harpswell Garden Club strives to make its section of Maine a prettier and a better place in which to live.



**HOLIDAY HOUSE — Castine, Maine
ON THE BEACH**



Rooms with private baths overlooking the OCEAN. Delicious Food — \$18.50 per day modified A.P.

Write for color brochure
Verna G. Allen Owner-Mgr.

rowantrees

Made by Hand by
Village Craftsmen

pottery

Blue Hill, Maine

Open All Year

**Blue Hill
Inn**

A small, quietly charming, New England Inn, located in this lovely seacoast village.

OPEN ALL YEAR

Blue Hill Tel. 207-374-2844

DAVID'S FOLLY

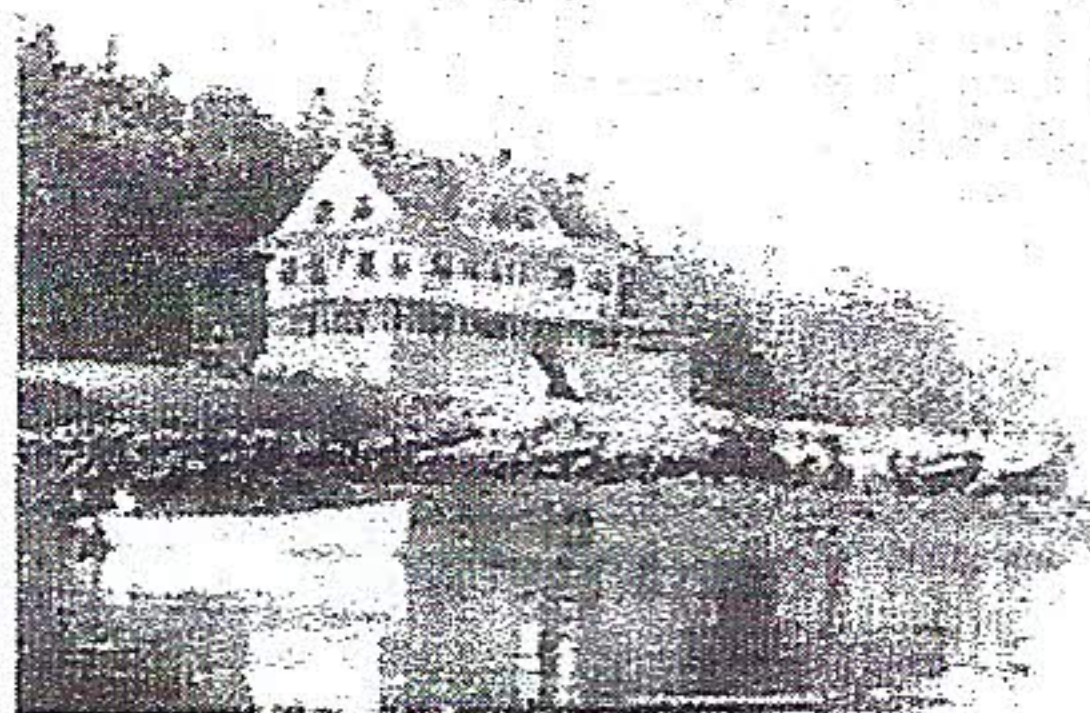
20 Minutes from Blue Hill
AT WEST BROOKSVILLE



Country living on a salt water farm on Penobscot Bay. Seafood, including Maine Coast Lobster, blueberry pie, our own vegetables and a coffee

pot always on the stove. Golf and Tennis nearby. Boating trips arranged. June 12 to October 2. Folder. Minerva E. Cutler, Route 176, West Brooksville, Maine. Tel. 326-8834.

EGGEMOGGIN INN ★ Little Deer Isle




A private estate on Eggemoggin Reach. Connected by bridge to the mainland via Route 15. Features include oceanfront rooms, sailing, cruising, fishing or just plain loafing. Small airport, golf and tennis nearby. Central headquarters for day tours of remote coastal areas and Acadia National Park. Continental Breakfast served. Write to Don Broadhead or tel. 207-348-2540.

RTE. 15

**THE BRIDGE END
ENTERPRISES**

Deer Isle-Sedgwick Bridge — Little Deer Isle, Maine
GEORGE ALDRICH, *Proprietor*

<p>Sleep Tight Tonight In Our 20 Unit</p> <p style="text-align: center;">MOTEL</p> <p>Tubs with Showers Baseboard Heat Right On The Water</p>	<p>Fresh Water - Ice Boats For Rent MARINA Gas Super Marine - Reg. Diesel Fuel Moorings and Supplies</p>
--	---



<p>Famous Lobster Shack RESTAURANT Lobsters - Steaks Chops - Clams - Chicken And Other Specialties</p>	<p>Featuring MAINE Handcrafts GIFT SHOP And Lovely Picnic Area Overlooking Beautiful Eggemoggin Reach</p>
---	--

WRITE US FOR COMPLETE DETAILS — 04650
Phone 348-2815



**MAINE SHORE
DINNERS**

BLASTOW'S COVE
LITTLE DEER ISLE

World Famous For Good Food
Scenic Beauty
and Cordial Hospitality

Enjoy our spacious Seaside Terrace or Cozy Dining Room with fireplace. 12 noon 'til 9 p.m. May thru October.

• • TRY OUR SALADS AND STEAKS • •

Eugene and Carolyn

**EATON'S
LOBSTER POOL**

Take Rt. 15 down to Little Deer Isle Bridge. After crossing the bridge keep on for 1 mile and follow the red lobster signs!

See Our Exclusive Regional Display of SHEEP ISLAND GEM STONES. View Sheep Island across from Eaton's Dining Room.



Little Deer Isle