

# AROOSTOOK COUNTY



## Northern National Bank "SERVING AROOSTOOK COUNTY"

Member Federal Deposit Ins. Corp. and Federal Reserve System  
14 Branch Offices Serving Aroostook County  
Main Office in Presque Isle

### Your Hallmark Stores

Featuring The Complete Hallmark Line  
Areas Largest Selection of Paperbacks and Magazines

### MARSTON'S of Presque Isle

483. Main Street and Presque Isle Shopping Plaza

### Libby Camps

Ashland, Maine 04732 Tel. 207-435-2741

Native trout

Landlocked salmon

Come fish the many lakes and streams in our remote wilderness areas. All on the headwaters of the Aroostook River near Millinocket Lake. American Plan at River Camp. Also housekeeping cabins on Chandler and Big Caribou Ponds. Famous since 1890.

Reached by seaplane.

### DEAD RIVER COMPANY

*Serving Aroostook County with Energy Fuel!*



### MCNALLY'S

#### A Naturalist's Hideaway Island

on a remote wilderness lake in Northern Maine. 21 miles from village over private road requiring advance permission and road pass. Unusually comfortable, individual log cabin accommodations. Meats served in a truly unique, log lodge dining room — are enhanced by fresh vegetables right from the camp garden as well as native wild berries and greens in season. You may enjoy some of the best trout fishing left in the East, visit active logging operations nearby, swim, sail, hike, or maybe just curl up with a good book in one of the lounge chairs in the shade of a huge white birch on the shore of the lake! This will be our 75th year of continuous family operation. Reservations recommended. Folder and further details gladly forwarded on request.

Mycki & Dana McNally, Box 200, Portage, Me. Tel. 207-435-4001

the venerable building never had possessed, and a friendship between the two Harpswells took root.

A sense of community responsibility has always guided Garden Club activities. Club contributions in the area include plants for the new Harpswell Island School; money toward the restoration of an old church in East Harpswell; decoration of churches, hospitals and libraries each Christmas, and maintenance of a formal garden on the Naval Air Station base at Brunswick.

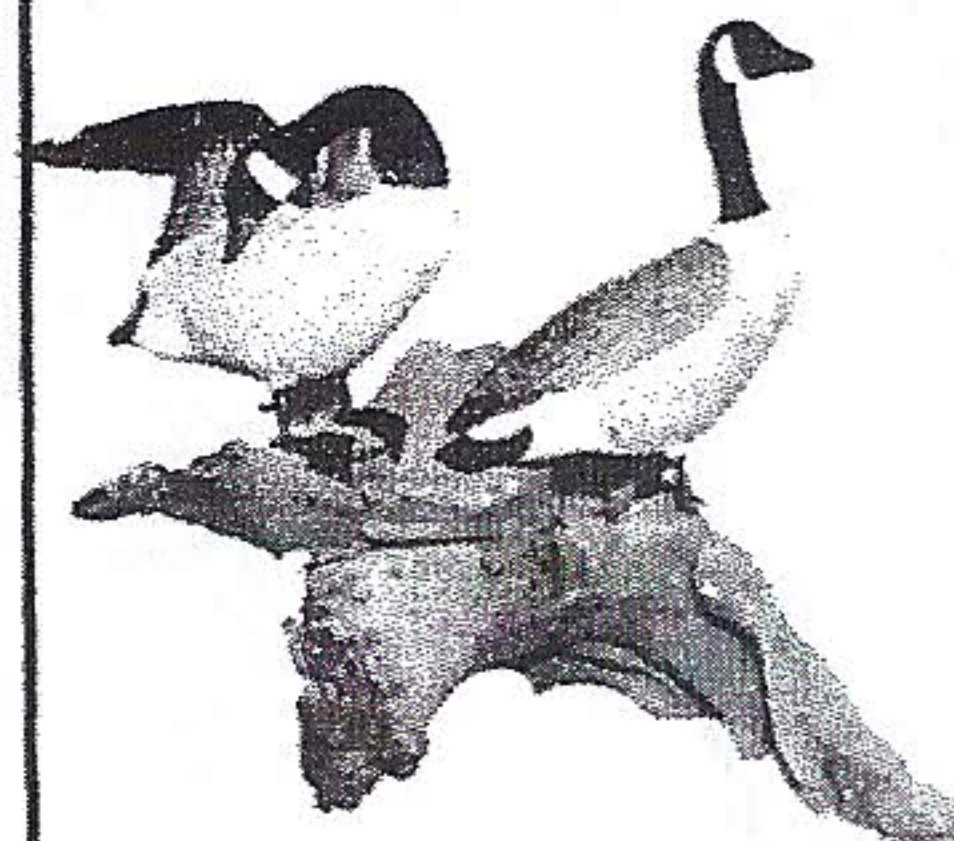
An interest in the need to preserve salt marshes led to a fund-raising campaign to save Stover's Point Marsh east of Harpswell Harbor. Club members raised \$3000 and, since 1969, have assumed the job of supervising and maintaining this four-acre natural resource.

One example of the club's concern for its community is its involvement in the Clayton Scholarship Fund. Arthur C. Clayton, a native of Harpswell for

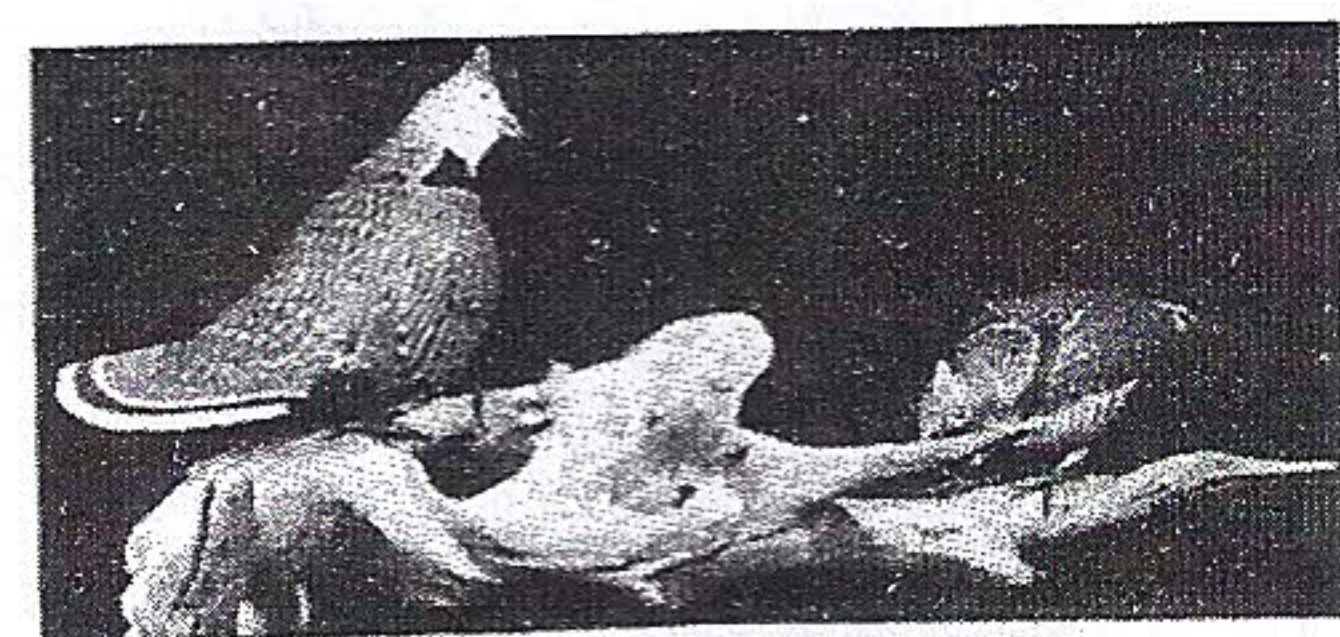
### HOTEL CARIBOU

*In the Heart of Aroostook County  
Fishing, Golf, Swimming, Hiking  
58 Fireproof Rooms*

### WOODCARVINGS & DRIFTWOOD CREATIONS



Carvings of geese, ducks, song birds and fish — Sold direct  
PAIR OF CANADA GEESE  
(shown) 1/2 life-size.



PAIR OF RUFFED GROUSE (shown) 1/2 life-size.

Christmas orders must be in by October 1.

EAGLES from \$50 — indoor or outdoor type — from Maine pine. Write for free folder.



To visit "Acadia National Park" this year you will come to ELLSWORTH, the gateway to the park. Why not plan a visit to my studio? Browse and chat — no obligation. Drop me a line — I'll send you a map of the city showing location of studio and make an appointment for you.

Driftwood Lamps and Decoys.

Open May 1 to October 1

If you have a special request, let me quote you. Sales room open 10 a.m. to 5 p.m. daily except Sundays.

### CAPTAIN ED MOORE

MAINE WOODCARVER

MEMBER NATIONAL WOODCARVERS ASS'N.

New Shop & Studio, 3 McKenzie Avenue, Ellsworth, Maine 04605